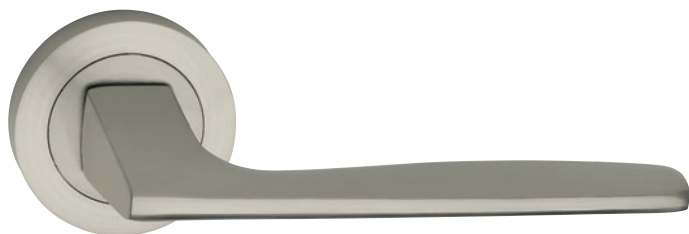


# SERIE YUMA

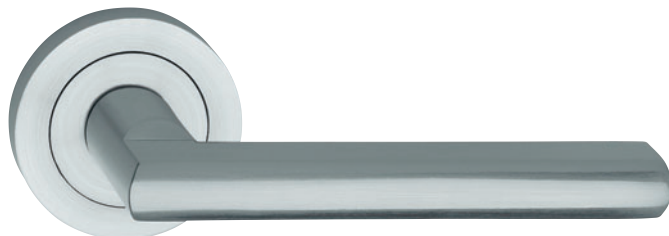
**8050/554TO**

ACABADOS: PLATA MATE  
NIQUEL MATE



**8051/554TO**

ACABADOS: PLATA MATE  
NIQUEL MATE



**8055/554TO**

ACABADOS: PLATA MATE



**8056/554TO**

ACABADOS: NIQUEL MATE



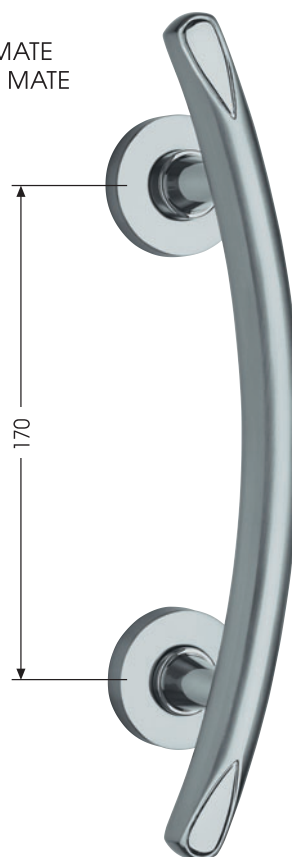
**82/89/554TO** Ø34,5

ACABADOS: PLATA MATE  
NIQUEL MATE



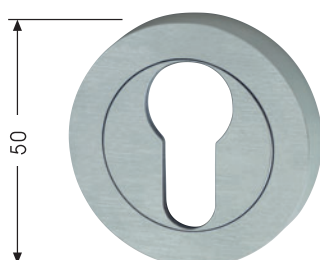
**T815/554TO**

ACABADOS: PLATA MATE  
NIQUEL MATE



**554TOY Bomb.**

ACABADOS: PLATA MATE  
NIQUEL MATE



# SERIE YUMA

## 1067-R (UNIFICADO 47)

ACABADO: PLATA MATE



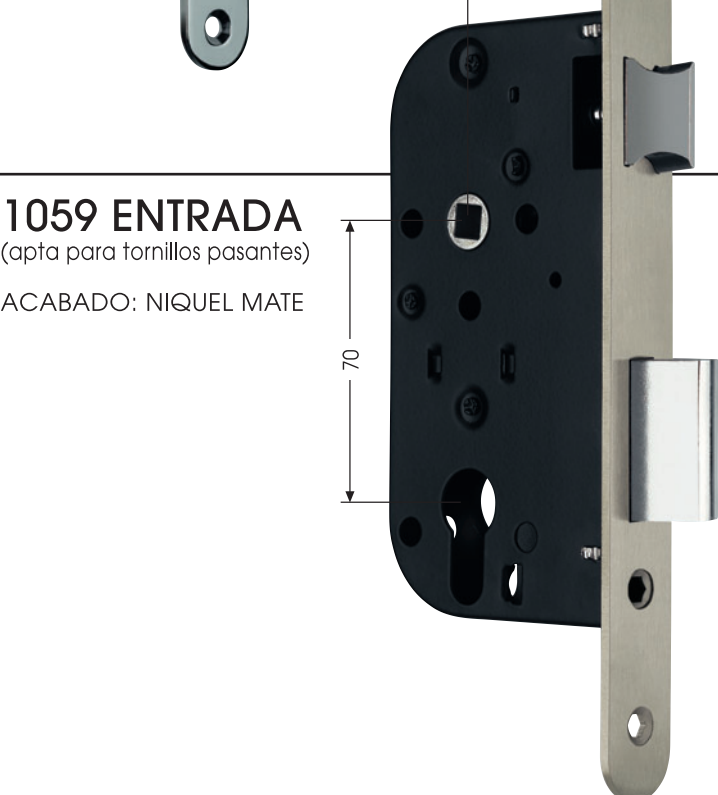
## 30-R INOX (100x55x2)



## 1068-R (UNIFICADO 70)

ACABADO: PLATA MATE

50 23

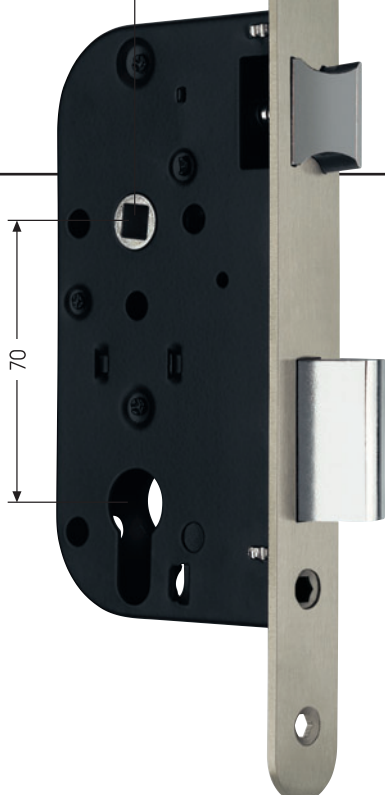


## 1059 ENTRADA

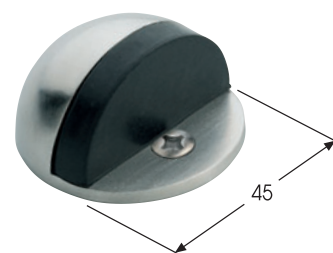
(apta para tornillos pasantes)

ACABADO: NIQUEL MATE

70



## 564 INOX



## 530

ACABADO: PLATA MATE



DOMICILIO SOCIAL  
PORTAL DE BETOÑO, 16 • 01013 VITORIA-GASTEIZ  
TEL. 945 26 34 00 • TEL. (INT.) 34-945 26 34 00

APDO./P.O. Box 95 • 01080 VITORIA-GASTEIZ  
ESPAÑA - SPAIN

FABRICA  
CARRETERA DE VERGARA, 17 • 01013 VITORIA-GASTEIZ